



Branchburg Central Middle School

Welcome Back!

Welcome

Ms. Gensel, Superintendent

Board of Education Members

Parents and Guardians

Student Council:

Please Stand



Welcome Remarks

Dana Lauducci & Sharon Kechula

BCMS Coordinators, Branchburg PTO

Greg Confer

President, Branchburg Education Foundation

What's new?

- New LED sign (thanks PTO!)
- Grade 6-8 revised S.S. Curriculum
- Grade 6-8 technology Curriculum
- New projector and screen
- Updated Media Center



Welcome

Jennilyn Nelson - Guidance



Maggie Ryan - Guidance



Vicki Brody - 7th Grade Special Ed

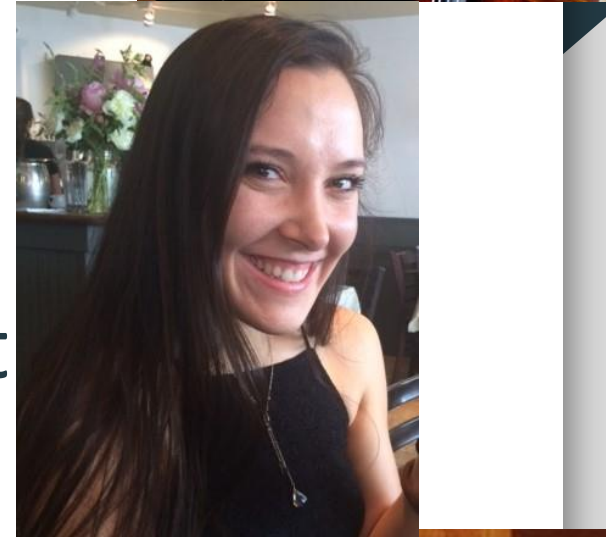


Welcome

Regina Cordell - Strings



Jillian DeSomma - Psychologist



Lauren DePrima - Speech

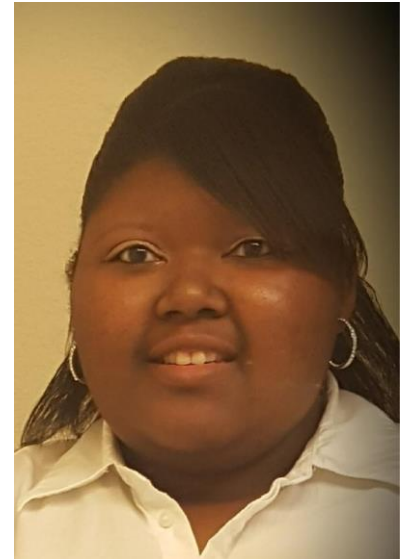


Welcome

Kristen Allen - MSRI



Leigh Keely - Leave
Replacement (Mrs. Perello)



Welcome

Kathy Blackstone - Leave Replacement
(Mrs. Cardona)

Alison Eby - District Behaviorist

Katherine Aldabagh - Instructional Aide

Welcome Back

Robert Katz - 8th grade SPED, MSRI

Monita Haduch 7th grade aide

Lori Villanova - ELL

Vicki Nguyen - 1/2 time special ed
replacement

Esthela Solano (now on Tenure track) -
Spanish

Enrichment Days

Looking for Volunteers

- To share an interest or activity with a small group of interested students.
- 2 ½ hours, BCMS teacher included!
- Or, we can bring a small group of interested students to YOU for a hands on experience!

Student requests include:

- Acting, Dance, First Aid, Filmmaking, Coding, Sign Language Model Building, Carpentry, Forensic Science, Cooking, Website Design, Photography, Origami, etc...

Contact Suzanne Updegrove if you would like to volunteer!



Picture Day - Monday, September 18th



PICTURE DAY IS ALMOST HERE!

Picture Day: Monday, September 18

Picture Day ID: WM117010Y0

All students are photographed for the yearbook. Order forms handed out to students on the first day of school. Extra copies are in the main office. Please send payment and order form directly to Lifetouch.

Customer Service phone number is 800-280-5388 Mon-Fri 9am-5pm.

1. Incorporating Real World and Student Directed Experiences

2. Varied and Ongoing Assessments Advance Learning as well as Measure it

3. Ongoing Professional Development Reflects Best Educational Practices

4. Every Student's Academic and Personal Development is Guided by an Adult Advocate

Incorporating Real World and Student Directed Experiences

Integrating Content Areas

Art Infused Education

Problem

Based Learning:

8th Grade Social Justice

7th Grade Blood Drive

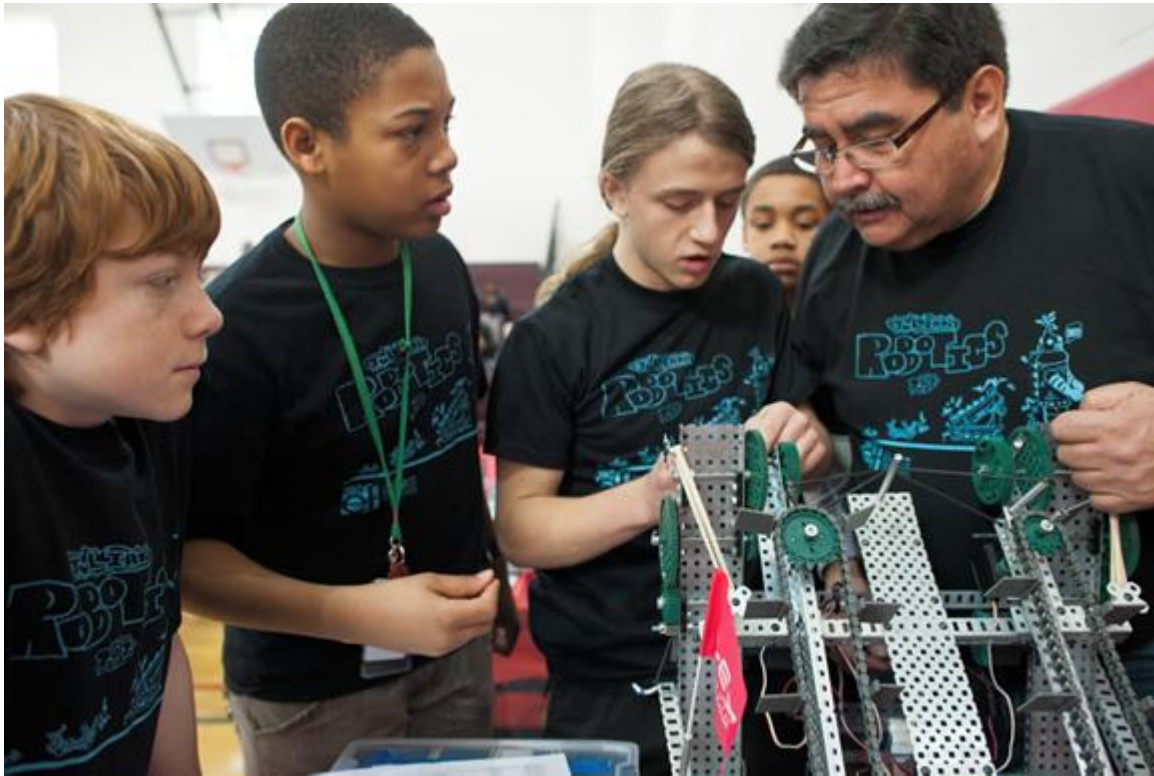


Varied and Ongoing Assessments Advance Learning as well as Measure it

Using data from MAP, PARCC and Classroom to make instructional decisions that best support students.



Every Student's Academic and Personal Development is Guided by an Adult Advocate



3 Most Important things in Real Estate

Location

Location

Location



3 Most Important things in Middle School

Relationships

Relationships

Relationships



Advisory Program

twice a month

mixed grade

1 teacher to 8-10 students

Focus on working together
and supporting each other





Electronic Agenda

Students and parents can access from any device

Rollout to students by early next week

Parent information will be included in the Friday News.

Back to School Night Schedule

Grade 6

Report to Period 1 to pick up schedule

Grade 7

- Remain here for presentation
- 7:49 - report to: resource - GATE, Band, Chorus, Strings, Instructional Support, or Main Lobby
- 8:01 Report to period 2 class for schedule

Grade 8

Force : Library

Innovator: Cafeteria

